

Just Cruisin with Mick and Sally

[Home](#)
[About Us](#)
[Travel Destinations](#)
[Photos](#)
[The Big One](#)
[Park Reports](#)
[Favourites](#)

Spear Creek - 7th August until 11th August 2008.

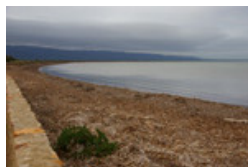
Spear Creek is 276kms north of Adelaide and is nestled in a rural setting against the back drop of the Flinders Ranges in South Australia.

Thurs 7th August 2008: It was 3:00pm when we left home and started to head north towards Spear Creek for the weekend. The weather wasn't looking too good although we were hoping that as we were going north, the rain would not annoy us as much as it would should we have been heading to a location on the Peninsula. It was our intention to overnight it at either a Parking Bay near Snowtown or our preferred location was another Parking Bay just south of Port Germein where we would have a coastal view in the morning.



After arriving at the preferred Port Germein Parking Bay at 5:30pm, it was time to witness the sunset over Whyalla before going inside to enjoy the evening meal before retiring to watch some TV news and then an early night ready for the final hours travel to Spear Creek in the morning.

Fri 8th August 2008: Time was now on our side as we only had approximately one hours travel before we would be arriving at Spear Creek so there was no rush this morning to get up and go. It is very nice to finally see the country side as green as it looks now with the recent rains really doing everything wonders. We were on the road again by 9.30am with it feeling as if we were on holidays with the overnight stop happening like it did. We decided to visit the small township of Port Germein to look at the water and jetty. It also gave Sally the opportunity to purchase some onions which we had left behind at home.

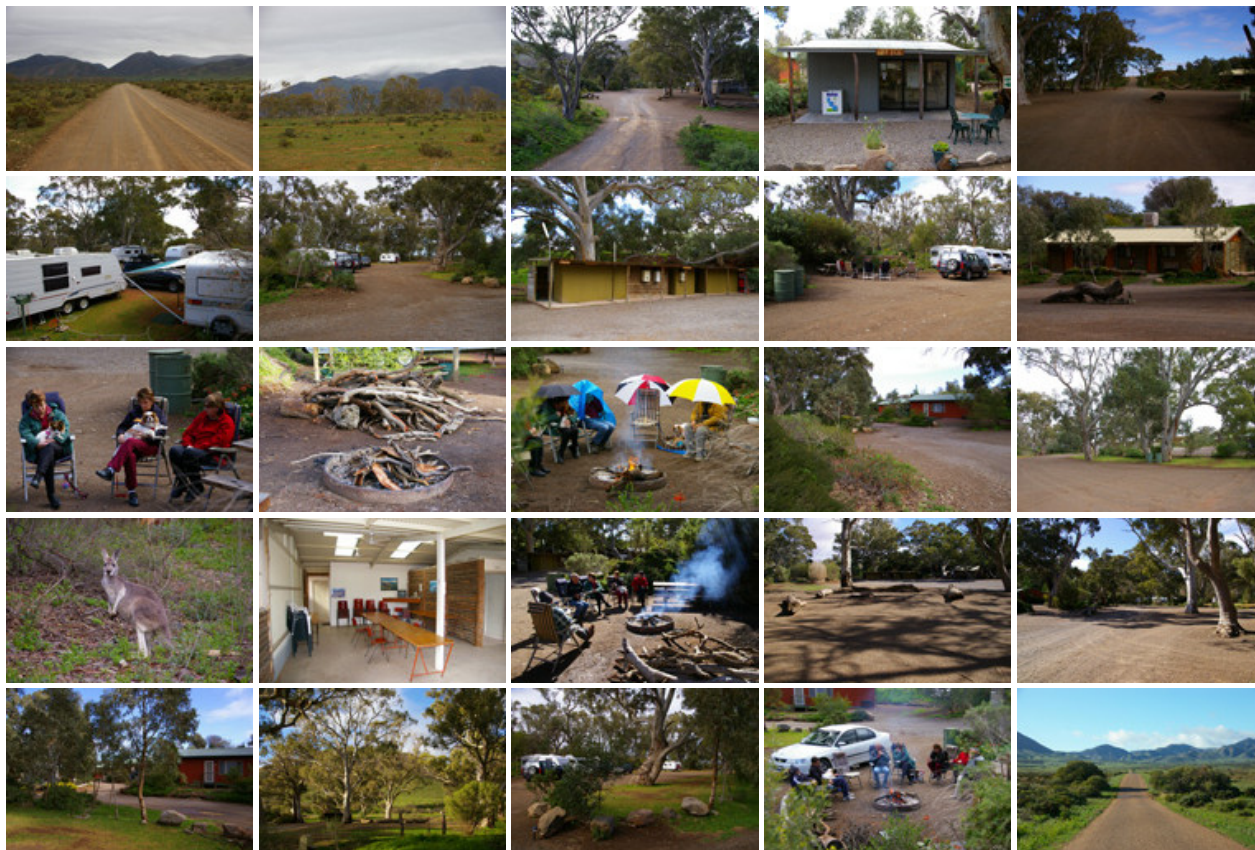


It was a very pretty drive heading from the main Adelaide to Port Augusta road up into the Caravan Park with the green paddocks and the low cloud cover on the Flinders Ranges. We arrived at Spear Creek by 10:30am, booked in and promptly set up our site for the weekend. Sue and Malcolm were not far behind us with their arrival and once everyone was set up and happy, Malcolm and I proceeded to collect a couple of loads of fire wood which we thought would have lasted for the weekend but not the case. It was late afternoon when Bruce and Maree arrived which now made the group complete.

Sat 9th & Sun 10th August 2008: Spear Creek is a Caravan Park set up in amongst very large gum trees with a rural atmosphere about it. The grounds are very clean and the people running the Park are excellent with a very friendly approach to their work. Our weekend consisted of full time relaxation with everyone enjoying the benefit of the camp fire when it did get a bit cold. The weather ranged from light showers which never really lasted more than a few minutes at a time and nothing was going to spoil the weekend. Even the umbrellas had a quick work out at one stage for a laugh while sitting at the fire.

Saturday saw Dion and Sam pay us a visit for lunch followed by Kerry and his daughter and grand kids on the Sunday

for lunch as well. We decided to collect some more wood on the Saturday afternoon just to make sure we didn't run out, a real benefit to be able to drive down the creek and collect fallen timber for the fire.



Mon 11th August 2008: As I am working afternoon shift this week, it enabled us to leave on the Monday to allow us to get back in time for work. with this in mind, we were up, showered and enjoyed a cook breakfast before we hit the road back to Adelaide at 9:00am. Bruce had an RDO and Maree wasn't due to work today so they were able to head back at their own pace. Sue and Malcolm living on the land were also able to go at their own pace. Sally and I arrived home at 12:30pm, ready for work and ready to start the final preparations for our next trip away to the Simpson Desert in three weeks time.

Park Report - [Click here](#) to read the full report on this Caravan Park

Our Park rating - 8 out of 10.  [Click here](#) to see rating numbers.


top of page