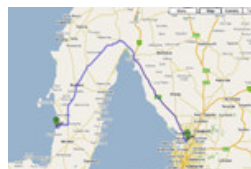


Just Cruisin with Mick and Sally

[Home](#)[About Us](#)[Travel Destinations](#)[Photos](#)[The Big One](#)[Park Reports](#)[Favourites](#)

Port Rickaby South Australia - February 12th 2010 until February 15th 2010..

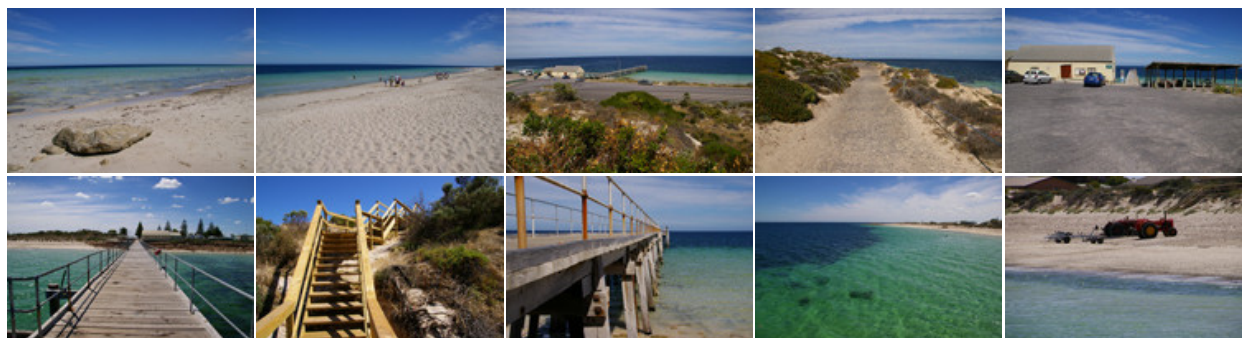


Port Rickaby Caravan Park is located 196kms West of Adelaide and is situated on the Eastern side of Spencer Gulf of South Australia.

Friday February 12th 2010: It was 2:30pm when we left home to start heading for Port Rickaby, I had the van packed and hitched up as I had finished work at 6:00am and Sally arrived home soon after 2:00pm. With the loss of my job when Bridgestone Australia close its doors for the last time at the end of April this year, the luxury of leaving home for a weekend away during the early Friday afternoon and not arriving home until Monday morning to start work during that afternoon will finish. We arrived at Port Rickaby at 5:00pm and were soon set up and enjoying the warm evening by the sea.

Saturday February 13th 2010: Today we woke to a very heavy dew with water dripping off of the caravan awning. After the usual breakfast and showers, we put the awning walls up before heading off into Minlaton where Sally went to the local craft shop. It is amazing to see a small country craft shop that is equal to or better than most in Adelaide with what it had to offer.





It was approximately 4:00pm when Bruce & Maree, our weekend guest who were camping in our annex arrived on site. After our very nice evening meal of roast chicken, we all settled into a game of Rummiking which took us all through to midnight before we retired for the night.

Sunday February 14th 2010: We were woken by 6:00am with rain falling onto the roof of our caravan. By 8:30am the sky had almost cleared which set was to be the way it stayed for the entire day. With light wind and sunshine, one could not wish for better weather. Our day consisted of beach walking, a bbq for lunch which took longer to cook than what was expected with our bbq gas bottle running out half way through the cooking. Some caravans had already left bringing their weekends to an end while some other caravanners arrived during the late morning and early afternoon. Bruce & Maree left us at 2:00pm to head home leaving Sally and I to enjoy our last afternoon before heading home the following day.

Monday February 15th 2010: Being not that far from home and work starting at 3:00pm, it gave us plenty of time to pack up and head off. After leaving Port Rickaby at 9:03am, we were soon sitting in our carport by 12:03pm. Hopefully our next trip away will be in March when we head for Port Vincent.

Park Report - [Click here](#) to read the full report on this Caravan Park

Our Park rating - 7 out of 10.  [Click here](#) to see rating numbers.

 ShinyStat™ Tot p. views 65357


top of page