

# Just Cruisin with Mick and Sally

[Home](#)
[About Us](#)
[Travel Destinations](#)
[Photos](#)
[The Big One](#)
[Park Reports](#)
[Favourites](#)

## Port Hughes - 9th March 2007 until 13th March 2007.

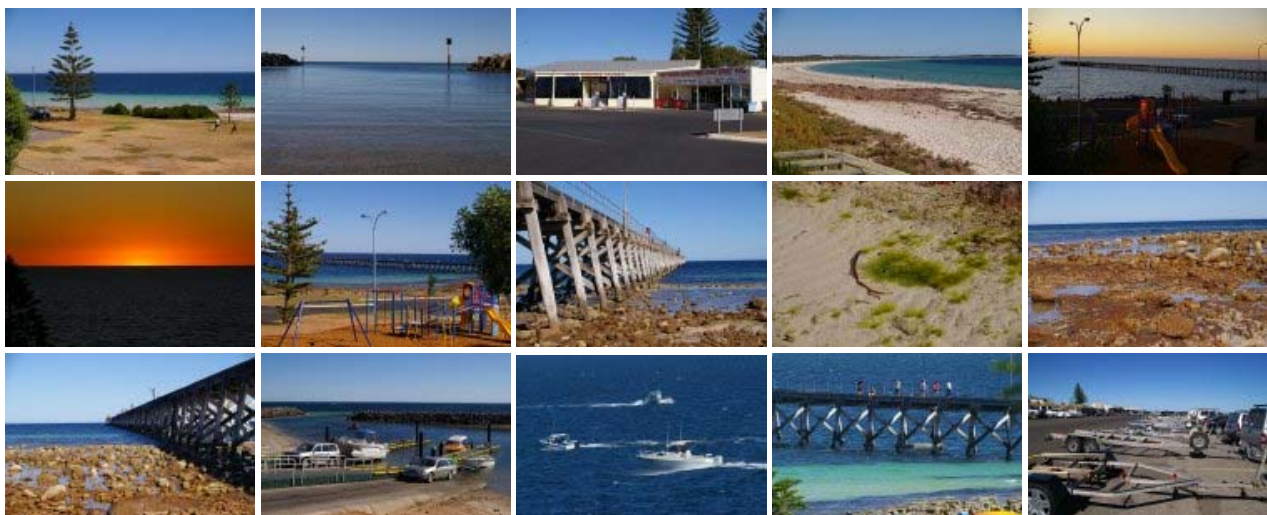
Port Hughes is located 169kms from home on the eastern side of Spencer Gulf.

**Fri 9th March 2007:** As I had been on night shift for the week and Sally wasn't due to work until Wednesday of next week, once I had had a few hours sleep, we were on our way to Port Hughes where we arrived at 1.20pm. The trip had only taken just under two hours to complete. This was our first trip away with our new walls for our awning so some extra time was needed to fit the walls for the first time. It was nice to be able to sit inside the annex out of the cold and watch the sun setting over Spencer Gulf. As Bruce and Maree had a wedding to attend today, it wasn't until very late into the night before they arrived.



[Click here](#) to view all images as a Slide Show.

**Sat 10th & Sun 11th March 2007:** Saturday was a very hot day for us with a very light breeze at times. Bruce and Maree completed their setting up and not much else was done with the heat. We ventured out to enjoy a very nice evening meal at the Port Hughes Tavern which was on the boundary of the caravan park. The boat car park was full of boat trailers as all of the hopeful fisher people were out on the water trying out their luck fishing. It was around 7.00pm when the cool change blew in dropping the temperature dramatically and from then on it just blew and blew.

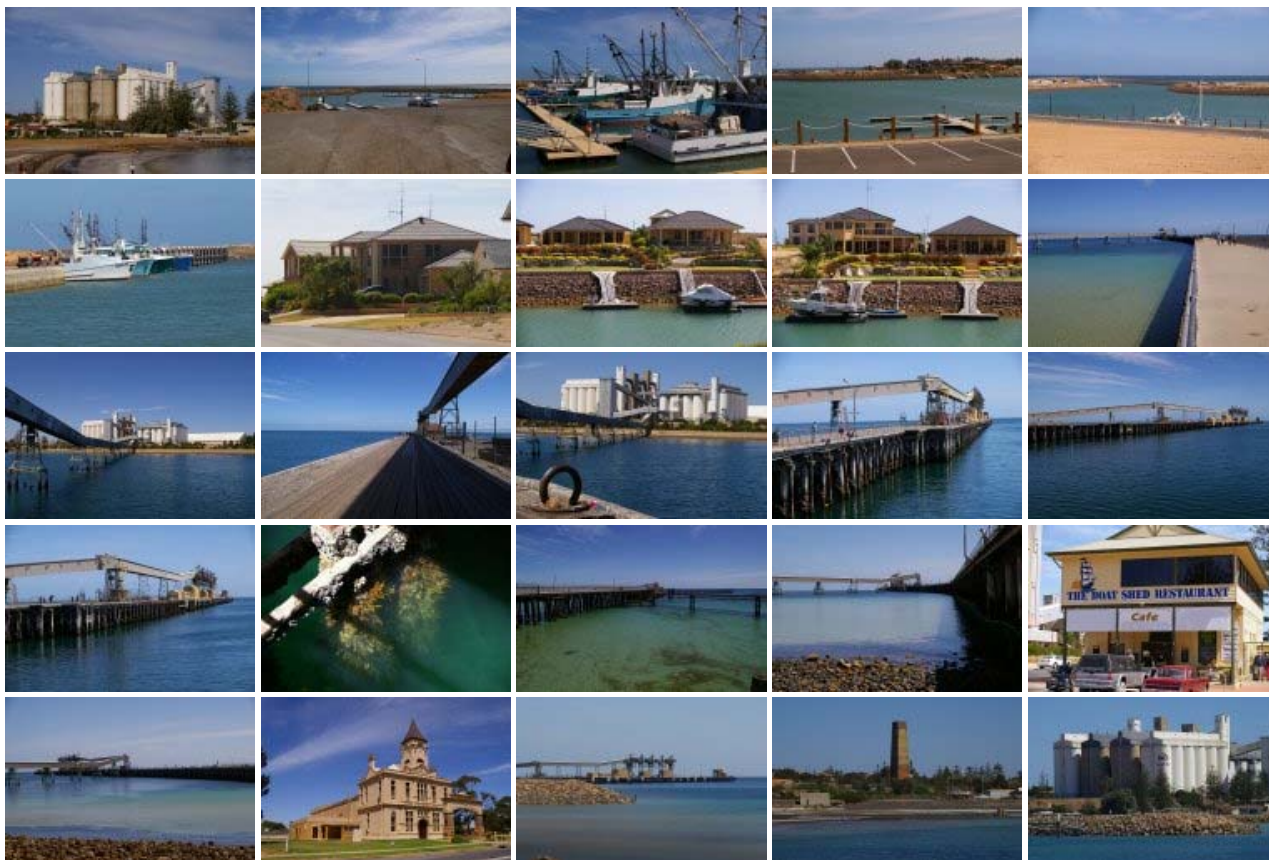




[Click here](#) to view all images as a Slide Show.

After an ideal night for sleeping, Sunday shaped up to be very nice with the exception of the wind which continued to blow but even the wind couldn't spoil our weekend. The view of the water that we all had looking from the back of our caravans soon made up for any wind or high temperatures that the weather could throw our way. Dion and Samantha came to spend the day with us and to drop off some freshly cooked blue swimmer crabs which they has caught at Port Germein the day before.

**Mon 12th March 2007:** Bruce and Maree were going home today and were busy packing while Sally and I contemplated what we were going to do with our day as we were not going home until the Tuesday. It was 10.30am as we waved Bruce and Maree goodbye and at that time we headed to Wallaroo to have a look at the new marina which was being built over the last several years.



[Click here](#) to view all images as a Slide Show.

As we arrived at Wallaroo, the new ferry was just going out of site as it headed across the Gulf on it's way to Lucky Bay. We decided to wait for the ferry to return as it was due to depart Wallaroo again at 3.30pm. This gave Sally a good excuse to have lunch at the Boat Shed Restaurant which is at the start of the main Wallaroo jetty. After a nice feed of whiting and garfish, we had a walk out onto the jetty before waiting for the ferry to return.



[Click here](#) to view all images as a Slide Show.

**Tues 13th March 2007:** Once out of bed, it was time to pack up the awning walls and get ready for the trip home. There was a lot of movement in the caravan park this morning with several caravans getting ready to leave. With the sun shining, we were on our way home by 9.30am where we arrived at 11.30am.

**Park Report** - [Click here](#) to read the full report on this Caravan Park

**Our Park rating** - 6 out of 10.  [Click here](#) to see rating numbers.

▲  
top of page