

Just Cruisin with Mick and Sally

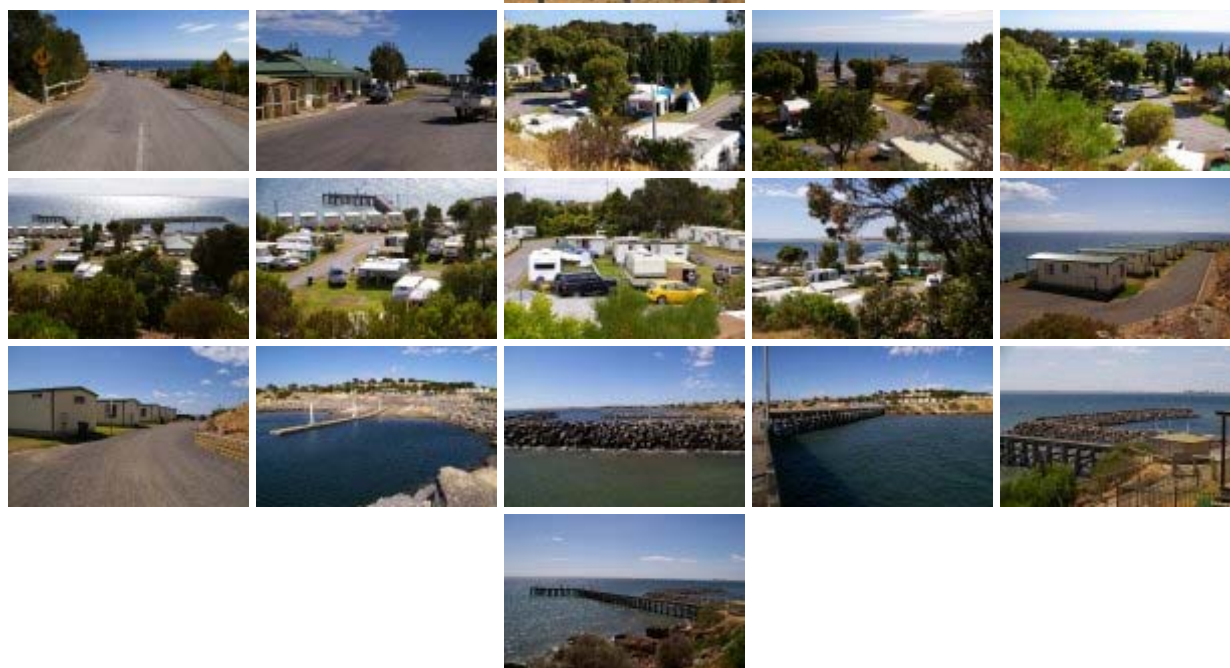
[Home](#)[About Us](#)[Travel Destinations](#)[Photos](#)[The Big One](#)[Park Reports](#)[Favourites](#)

Point Turton - 5th January 2007 until January 8th 2007.

Point Turton Caravan Park is located on the western side at the bottom of Yorke Peninsula South Australia some 250kms from Adelaide.

Fri 5th January 2007: It was early afternoon as we drove towards Port Wakefield with the weather looking a bit like it was going to rain. Not allowing this to deter us from enjoying our weekend, we soon arrived at Point Turton where the Caravan Park is situated near the town jetty which offered good fishing most of the time.

Sat 6th January 2007: As it turned out, today was the best weather wise day that we had with the exception of the strong wind which was blowing most of the day. The wind didn't bother us in the Caravan Park as it was blocked by the high cliff which the Park is situated up against. The only down side to all of the wind was the dirty ocean water which was causing all of the fish to seek protection from their predators. It was good to be able to walk from the Park to the jetty in less than a minute which made it very easy to monitor the lack of fish catches. There was enough sunshine during the day to get a little sun burnt if one wasn't too careful.



[Click here](#) to view all images as a Slide Show.

Sun 7th January 2007:The day broke with the sky filled with rain clouds although nothing really fell all day. Just before lunch we took the short drive to Hardwick Bay where we had a look at some beach shacks which ranged from the original version shack to the modern up to day holiday house that you would build after you had won x-lotto. There wasn't very much activity on the jetty until late afternoon when a few fisher people ventured onto the jetty to try their luck. Two garfish were caught early evening, other than that not much else was about.

Mon 8th January 2007:The dogs had become to like their walks out onto the jetty and were soon ready for their final walk before we headed for home. There were already some people out on the jetty at 7:00am trying to catch whatever was prepare to take their baits. Once packed up, we were on the road by 8:08am and back home by 10:46am. Our next trip away is an unknown at the moment as there are several possibilities in the pipeline.



Ruby wanted to check out the way home just to make sure that we didn't get lost along the way while Missie was willing to leave it all to safe hands and trust.



Park Report - [Click here](#) to read the full report on this Caravan Park

Our Park rating - 6 out of 10.  [Click here](#) to see rating numbers.

▲
top of page