

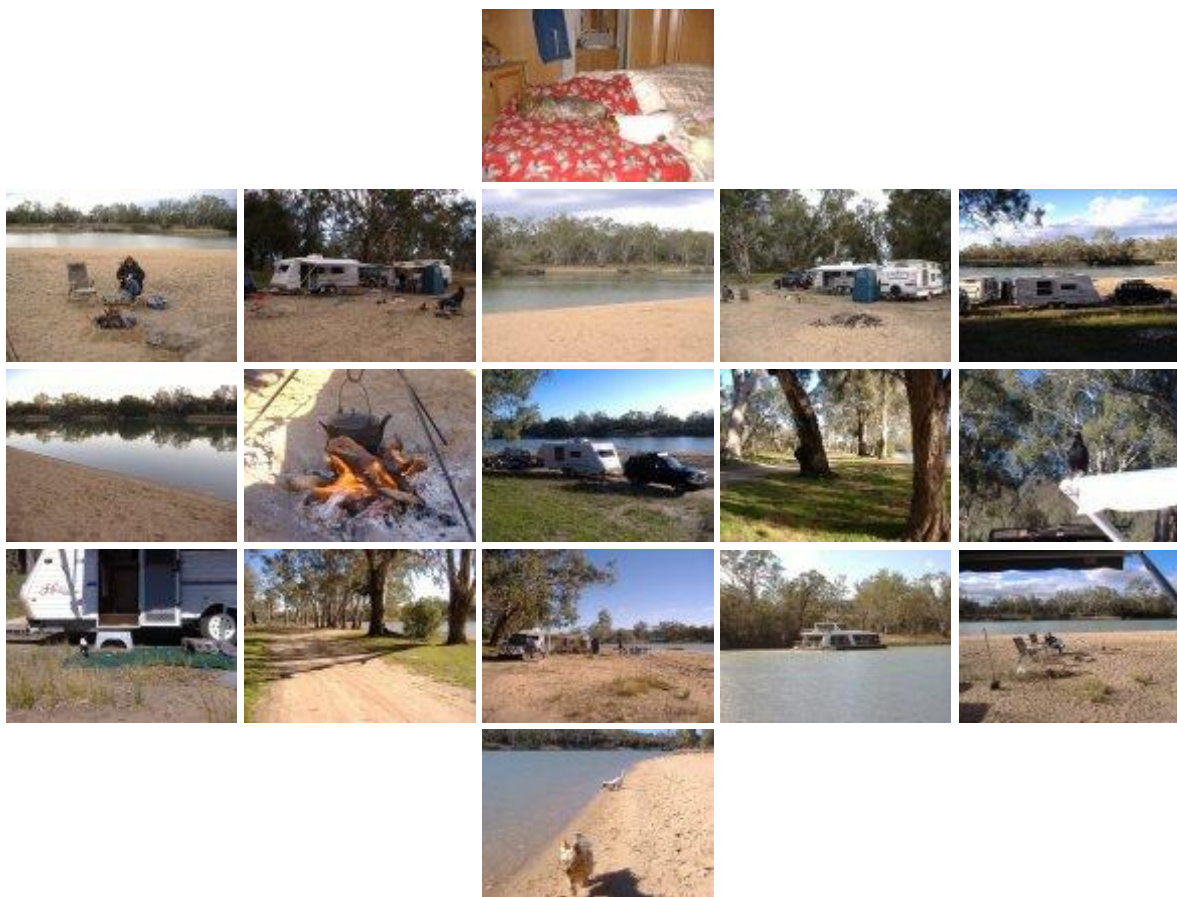
[Home](#)[About Us](#)[Travel Destinations](#)[Photos](#)[The Big One](#)[Park Reports](#)[Favourites](#)

Hogwash Bend South Australia - July 28th until July 30th 2006.

Large camping area along the Murray River situated 196kms from Adelaide between Morgan and Waikerie.

Fri 28th May 2006: Sally wasn't rostered to work this weekend and I had finished night shift at 6.00am, we were soon on our way to Hogwash Bend for the weekend leaving home soon after 7.00am. Bruce and Maree who were not with us on our last trip to Hogwash Bend were with us for this weekend. With Sally driving for a great deal of the trip up, it was just before 9.30am when we arrived and it was soon after that and Bruce was bogged in the sand with his caravan in tow. After a couple of attempts to dig him out, it wasn't until we let the tyres down that he finally got out. The remainder of the day was all about relaxing, catching up on lost sleep and enjoying a camp oven stew for tea.

Sat 29th May 2006: For the remainder of the weekend, our time was spend sitting around the camp fire, walking and more relaxing around the fire and finally with a camp oven roast for tea.



Sun 30th May 2006: As we were not in a Caravan Park, we were at our leisure to leave when we liked and for that reason we lounged around and slowly packed up during the morning. Once we had finished our bbq for lunch, the dishes were done and we were on the road by 1.00pm and arriving home soon after 1.15pm. We had a little wind at times but nothing to spoil the weekend and with no rain while away, it was a good weekend enjoyed by all. Our next trip is intended to be Burra Creek in two weeks time.

